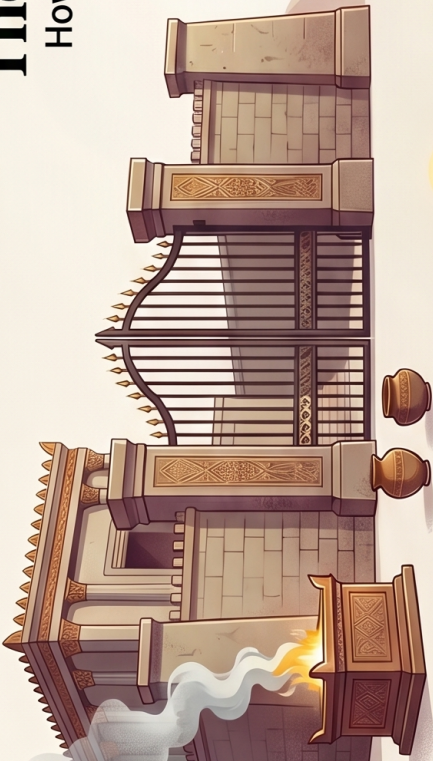
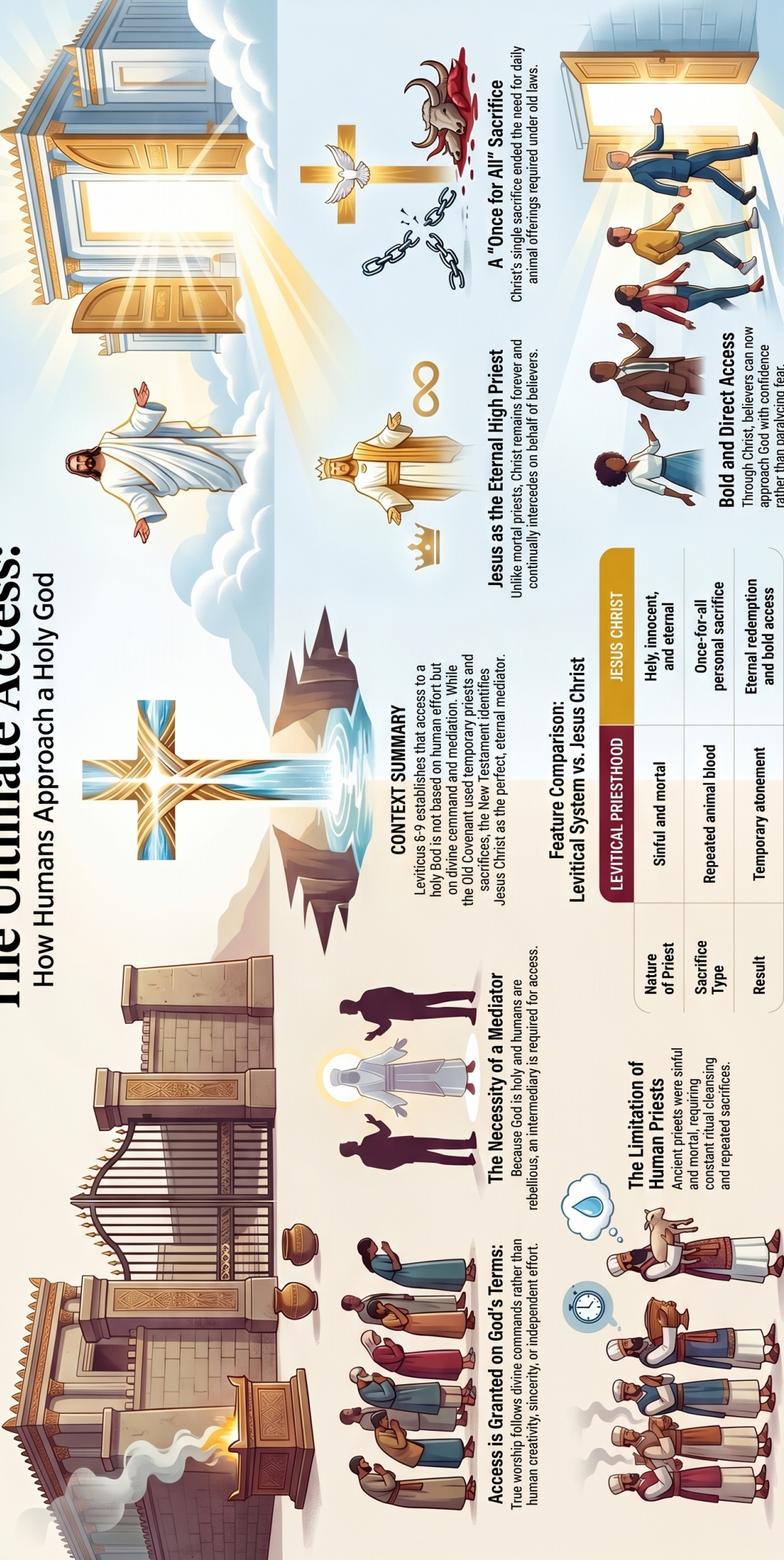


THE FOUNDATION OF ACCESS

The Ultimate Access:

How Humans Approach a Holy God

THE PERFECT FULFILLMENT

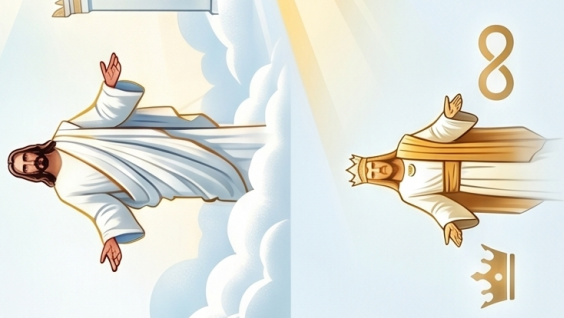


Access is Granted on God's Terms:
True worship follows divine commands rather than human creativity, sincerity, or independent effort.



The Necessity of a Mediator
Because God is holy and humans are rebellious, an intermediary is required for access.

CONTEXT SUMMARY
Leviticus 8-9 establishes that access to a holy God is not based on human effort, but on divine command and mediation. While the Old Covenant used temporary priests and sacrifices, the New Testament identifies Jesus Christ as the perfect, eternal mediator.



Jesus as the Eternal High Priest
Unlike mortal priests, Christ remains forever and continually intercedes on behalf of believers.

A "Once for All" Sacrifice
Christ's single sacrifice ended the need for daily animal offerings required under old laws.



The Limitation of Human Priests
Ancient priests were sinful and mortal, requiring constant ritual cleansing and repeated sacrifices.

Feature Comparison: Levitical System vs. Jesus Christ

	LEVITICAL PRIESTHOOD	JESUS CHRIST
Nature of Priest	Sinful and mortal	Holy, innocent, and eternal
Sacrifice Type	Repeated animal blood	Once-for-all personal sacrifice
Result	Temporary atonement	Eternal redemption and bold access



Bold and Direct Access
Through Christ, believers can now approach God with confidence rather than paralyzing fear.